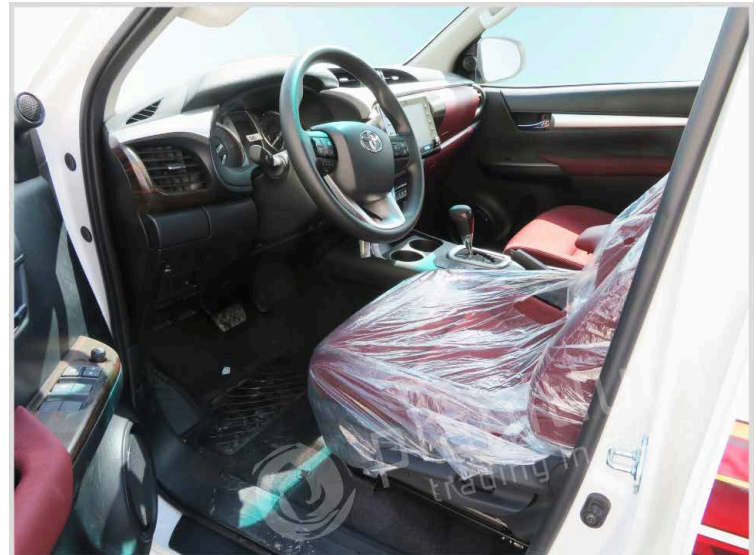


# TOYOTA HILUX 2.8 TDSL AUTO DOUBLE CAB 4X4 GLX Z ZT MY 2022



<b>BASE MODEL</b>	
MAKE	TOYOTA
MODEL NAME	HILUX 4WD D/C 2.8L
GRADE	HILUX D/C 4WD 2.8 DSL GLX-Z A/T
KATASHIKI	GUN126L-DTTHXV
BODY TYPE	PICKUP

<b>DIMENSIONS</b>	
DIMENSIONS Lx Wx H mm	5325 X 1855 X 1815
DECK DIMENSIONS Lx Wx H mm	1520 X 1575 X 480
WHEEL BASE mm	3085
GROUND CLEARANCE mm	310
KERB WEIGHT (Kgs)	2015-2110
GROSS VEHICLE WEIGHT (Kgs)	2910
FUEL TANK CAPACITY Ltrs.	80

<b>ENGINE &amp; DRIVETRAIN</b>	
DISPLACEMENT cc	2755
HP SAE (Net)	174-->201
TORQUE KgM SAE (Net)	45.9-->51
TYPE	4 CYL,16V, DOHC
FUEL SYSTEM	EFI W/ COMMON RAIL& INTERCOOLER (EURO4 W/OBD)
FUEL TYPE	DIESEL
CATALYTIC CONVERTER	WITH
T/M	6-SPEED A/T
4WD OPTIONS	PART-TIME
DIFF. OPTION	AUTO DISCONNECT DIFFERENTIAL W/ REAR DL

<b>INTERIOR</b>	
CONSOLE BOX	CONSOLE BOX W/SOFT LID
Fr. SEAT BELT	3PELRx2 W/PT & FL
VERTICAL SEAT ADJUSTER	WITH
Rr. SEAT BELT	3PELRx2+2PNRx1
HEAD REST	WITH (2 No.)
CENTRE ARMREST	WITH
DIGITAL CLOCK	WITH
INNER REAR VIEW MIRROR	DAY/NIGHT
SEAT MATERIAL	SUPERIOR FABRIC
SEATING CAPACITY	5
SUN VISOR	D(W/HOLDER) + P(W/MIRROR & LID)
TACHOMETER	WITH

<b>EXTERIOR</b>	
BUMPER: Fr. & Rr.	PP-->STEEL/ STEEL STEP CHROME
DOOR HANDLES	CHROME PLATED
MUD GUARDS: Fr. & Rr.	FRONT * + REAR *
OUTER MIRROR: COLOUR KEYED	CHROME PLATED WITH TURN SIGNAL
POWER	WITH
SIDE STEP	WITH
SIDE STRIPE *	WITH - NEW DESIGN*
WINDSHIELD GLASS	GREEN LAMINATED W/TOP SHADE

<b>TIRE</b>	
TIRE SIZE	265 / 65 R17 ALL TERRAIN
WHEEL CAP	ALLOYS/STEEL SPARE TIRE
<b>STEERING</b>	
POWER/TILT	WITH/WITH
<b>BRAKE</b>	
FRONT/REAR	V.DISC/DRUM
<b>SUSPENSION</b>	
FRONT	DOUBLE WISHBONE
REAR	LEAF SPRING
<b>SAFETY</b>	
ABS + EBD + BA	WITH
AIR BAG	D + P + KNEE (DRIVER)
VSC+HILLSTART ASSIST CONTROL (HAC) + TRAILER SWAY CONTROL (TSC)	WITH

<b>ELECTRICAL</b>	
AC/HEATER	WITH (AUTO)+REAR DUCT / WITH
ANTENNA	SHORT POLE
AUDIO	8" DA WITH USB/BT,6 SPK
KEYLESS ENTRY	WITH
METER ILLUMINATION CONTROL	WITH
POWER DOOR LOCK	WITH
POWER WINDOW	WITH
RADIO	AM/FM
WIPER FR	ADJ. INTERMITTENT: MIST

<b>OTHERS</b>	
LIGHT CONTROL SYSTEM	W/ FOLLOW ME HOME
ANTI-THEFT IMMOBILISER	WITH
BACK VIEW CAMERA	WITH *
BADGE*	GLX-S*
COOL GLOVE BOX	WITH
CRUISE CONTROL	WITH
DOOR COURTESY LAMP	W/ REFLECTOR
ECO/POWER DRIVE MODE	WITH

FRONT BUMPER GUARD*	WITH*
FRONT FOG LAMP	WITH
HEADLAMP	LED W/ AUTO LEVELLING + LED DRL
MUFFLER CUTTER*	WITHOUT
MULTI INFO DISPLAY	W/ TFT TYPE
RADIATOR GRILLE	CHROME + METALIC BLACK
REAR FOG LAMP	WITH
REAR WINDOW	SLIDE TYPE
SAFETY KIT *	WITH
SHIFT LEVER KNOB	W/ WOOD
STEERING WHEEL	URETHANE W/ CONTROL SWITCHES,
DECK TYPE	J'DECK WITHOUT GUARD FRAME
TAILGATE LIFT ASSIST	WITH
HOOD LIFT ASSIST	WITH
IR CUT GLASS (FR+SIDE+RR)	WITH
WOODGRAIN PANEL	WITH
SENSORS	FR2+RR4
TYRE PRESSURE MONITORING SYSTEM	WITH